




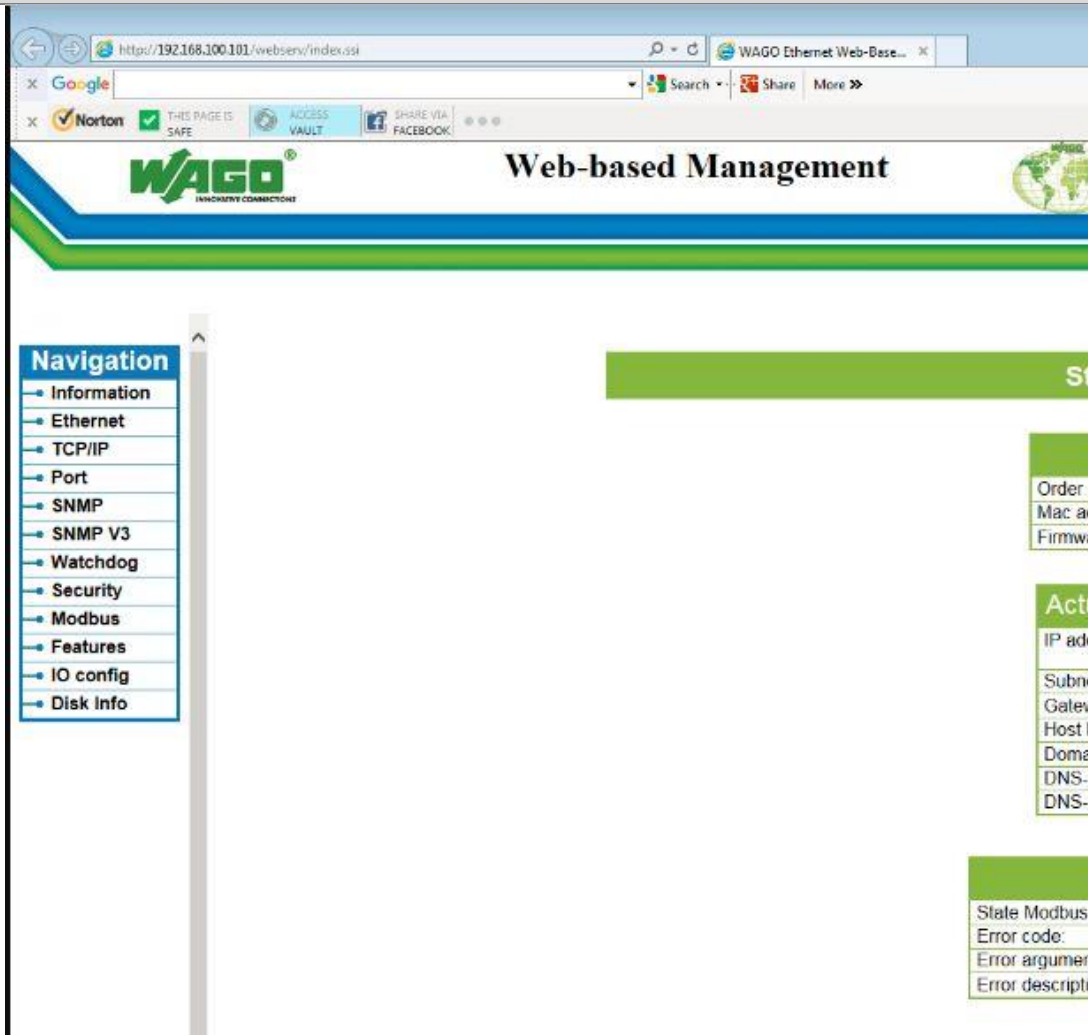
Wago and Beckhoff electronic modules troubleshooting

It rarely happens that the ethernet communication between the PC of the test bench and the electronic acquisition modules (Wago or Beckhoff) is interrupted. In such event the following instruction might help.

Possible problem	Possible solution
Blown fuse	<ul style="list-style-type: none"> open the electric cabinet; if most of components are down it might be that a fuse is blown, including the electrical supply of the electronic modules. If so replace the fuse.
PC initial booting not completed	<ul style="list-style-type: none"> when you turn on the test bench give enough time to the PC to complete the initial booting. If you run a program while the boot is still in progress, you may get an error on the screen (for example "Error connecting GPIB driver or device"). Restart the PC and let it complete its booting.
Ethernet cable not correctly inserted	<ul style="list-style-type: none"> ensure the ethernet cable is correctly inserted in both ends, the PC backside (usually labelled Wago or Beckhoff) and the Wago or Beckhoff main module (black circled in the picture) 
Wrong ethernet cable	<ul style="list-style-type: none"> ensure you're using the ethernet cable that was supplied with the test bench or in any case: a "crossed" type if Wago or Beckhoff modules are directly connected to the PC, or a normal type ethernet cable in case an ethernet switch is installed in between
Wrong IP address	<ul style="list-style-type: none"> open a DOS window and ping (read more) the I/O modules address (for example 192.168.100.101). The correct address to ping is the one printed on the label stuck on Wago or Beckhoff main module (see red rectangle in the picture above)
Problem with Wago modules	<ul style="list-style-type: none"> connect the PC of the test bench to internet and type Wago IP address in a browser, then digit username: admin and password: wago. The correct address to ping is the one printed on the label stuck on Wago main module (see red rectangle in the picture above), for example 192.168.100.101 The following page will be displayed and in case of errors they will be listed in the last window "Modules status"



Possible problem	Possible solution
------------------	-------------------



- In case you cannot connect the PC of the test bench to internet you should check led status of Wago main module (read "Wago modules LED display.pdf" attached here below)

Problem with Beckhoff modules	<ul style="list-style-type: none"> • read Beckhoff bus coupler (BK9050) troubleshooting
--------------------------------------	--

Problem with the ethernet card of the PC	<ul style="list-style-type: none"> • ensure the PC ethernet card is still ok: open Windows control panel and check
---	---



Possible problem	Possible solution
PC ethernet card wrong settings	<ul style="list-style-type: none">ensure that the IP V4 ADDRESS of the PC ethernet card is in the same subnet of the electronic module IP address (for example 192.168.100.100) and that the SUBNET MASK is 255.255.255.0
IP address conflict	<ul style="list-style-type: none">in case the test bench has been connected to the factory LAN network, temporarily remove this connection
Problem with the ethernet connector	<ul style="list-style-type: none">when PC is outside the electric cabinet you should bypass the ethernet connector (yellow circled in the picture) - the one that passes through the wall of the electric cabinet - and connect a direct single ethernet cable, crossed type, from PC backside (usually labelled Wago or Beckhoff) and Wago or Beckhoff main module (black circled in the picture above). To do this you can use the bottom of the electric cabinet to let the ethernet cable reach outside

