

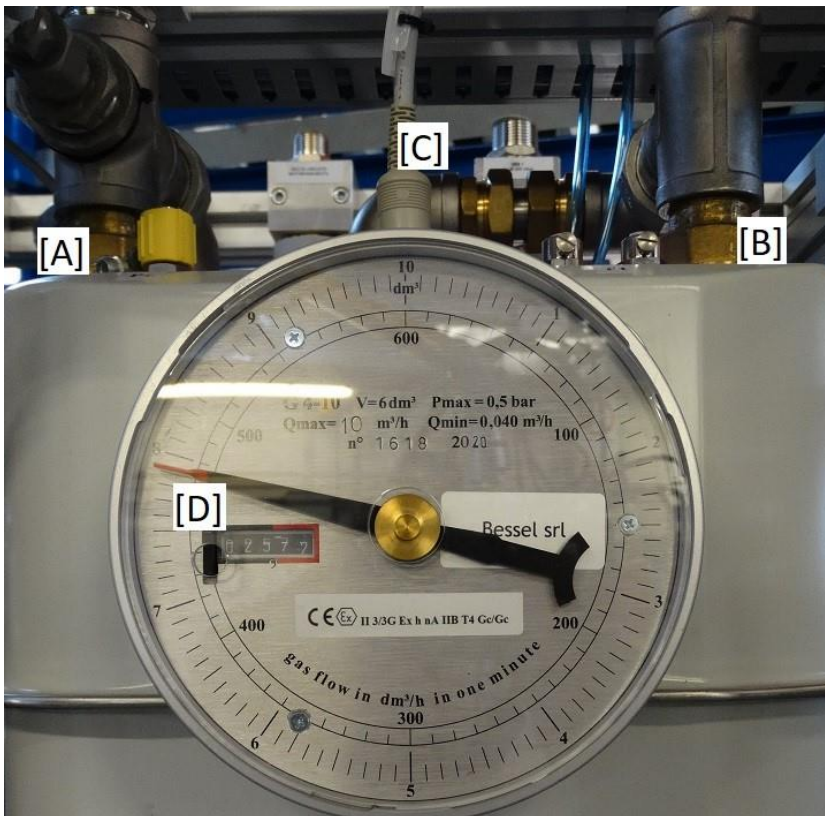


Can the gas meter / counter - be damaged by over-pressurization?

Typical gas meters - counters supplied by Microplan have a maximum inlet pressure of 500 mbar (7.25 psig).

Over-pressurization may cause internal damage to this instrument.

In this case, check the meter as follows:



1. Close gas supply valves
2. Disconnect electrical [C] and gas connections, inlet [A] and outlet [B], to the meter.
3. Supply air at about 50-70 mbar (0.7 to 1.0 psi) at the meter inlet [A], leaving the outlet open [B] to the atmosphere. Do not exceed the mentioned pressure.
4. Watch the needle on the flow meter to see if it rotates.
5. If the needle doesn't rotate, but numbers [D] on the front panel increases, make sure the needle is properly fixed.
6. If neither the needle, nor the counter increase it means there is an internal damage to the meter. In this case, have the meter repaired by a qualified contractor or replaced.