

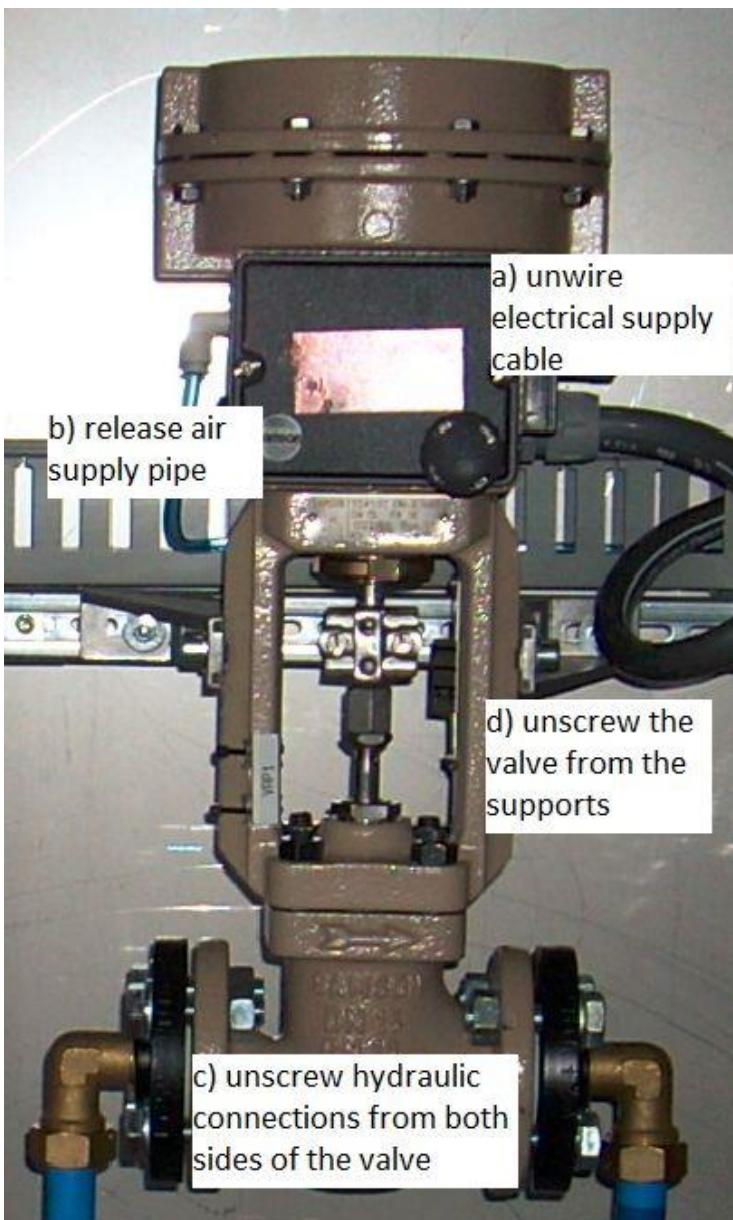


## How can I clean a Samson proportional valve?

### A) Preliminary steps:

1. use the diagnostic program to evacuate water from the circuit where the valve is installed
2. turn-off the test bench
3. close compressed air manual valve
4. close all water inlets manual valves

### B) Disassemble the valve as per following instructions:





C) Disassemble the hydraulic body from the valve (4 bolts in the yellow rectangle):



D) You might find dirt had cumulated inside the hydraulic body and stroke as follows:





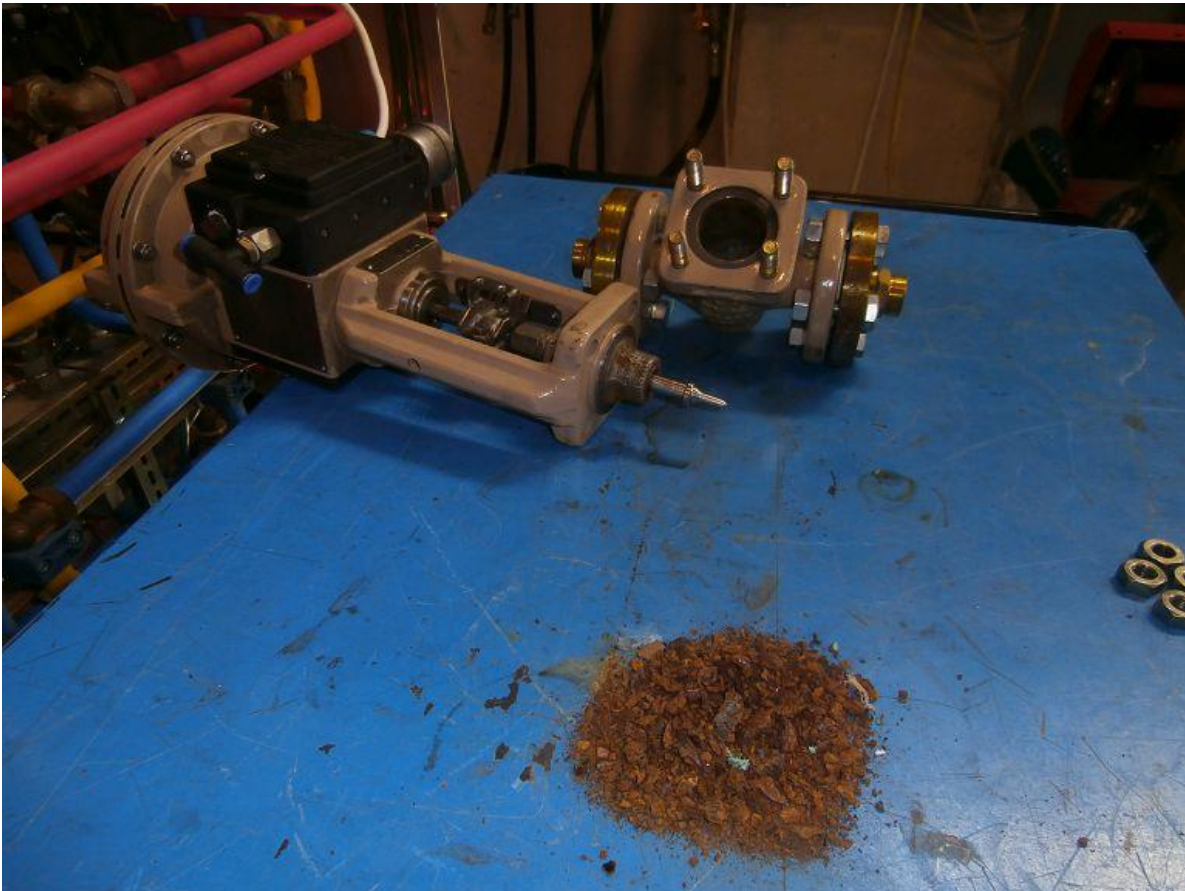
E) Clean the inside hydraulic body and the stroke with a metallic brush:



F) You should terminate with a cleaned valve and stroke and be astonished by the amount of dirt that can cumulate inside the valve over the time







G) Re-assemble the hydraulic body to the valve (screw the 4 bolts) and connect the valve to the test bench (hydraulic, pneumatic and electric connections). When done turn-on the test bench, open air and water supply manual valves and use the cursor bar of the diagnostic program to double check correct operations of the proportional valve, for instance producing a variation of water flow rate.