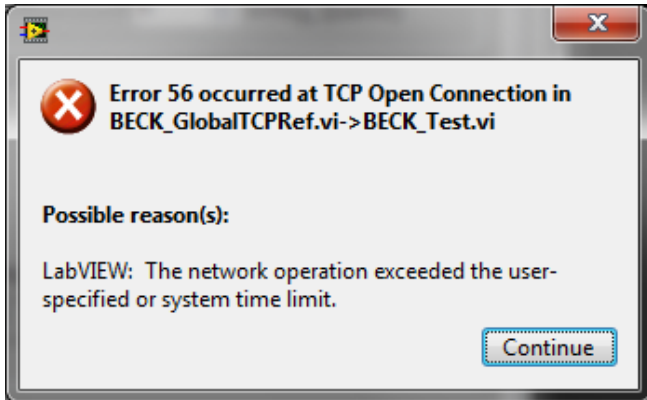




## How can I solve Error occurred at TCP Open Connection?



Error at TCP Open Connection, which might appear as Error 42, Error 56 and Error 59, is displayed whenever the communication between the PC of the test bench and the electronic I/O modules is interrupted.

To solve this problem follow the instructions: [Wago and Beckhoff electronic modules troubleshooting](#)

