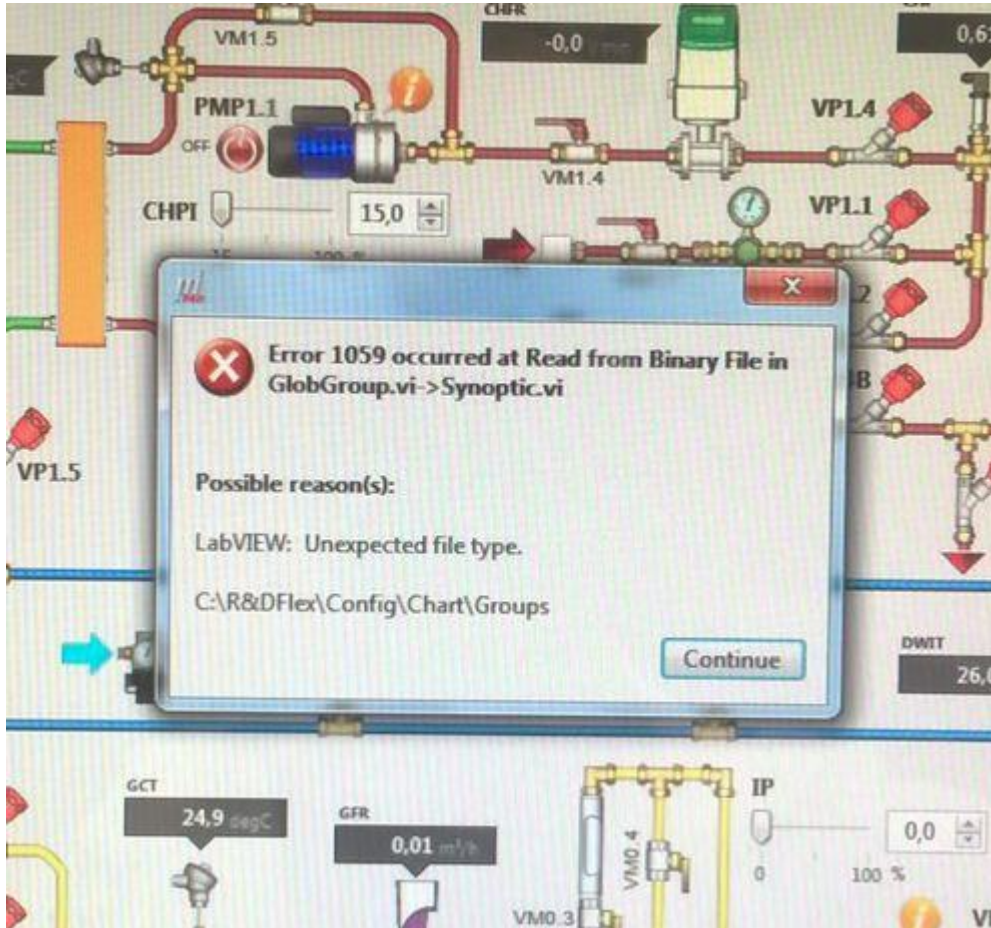




How to solve Error 1059 occurred at Read from Binary File?



In case this error is displayed it could be that some configuration files have been corrupted. Should it happen you have to:

- close the software that controls the test bench "R&DFlex" or "Labsoft"
- open the folder "C:\R&DFlex\Config\Chart" or C:\Labsoft\Config\Chart" and delete all its content
- run the software "R&DFlex" or "Labsoft" and ensure everything works fine. The software will automatically recreate the deleted files therefore the system should work back again