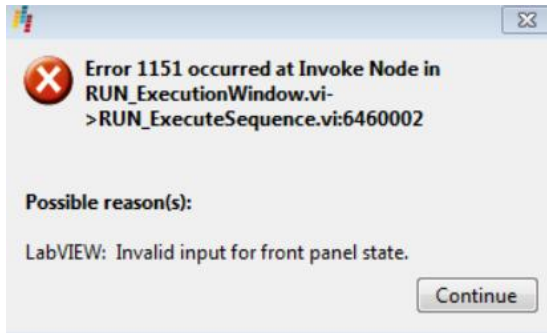




How can I correct Error 1151 occurred at RUN ExecutionWindows.vi?



Error 1151 occurred at RUN ExecutionWindows.vi

Execute the following operations in order to get rid of this error:

1. close ParSeq software
2. open the folder C:\ProgramData\Microplan\ParSeq\Cfg

Be aware that the files `_Config.ini` and `Config.ini` are located in the folder C:\ProgramData\Microplan\Parseq\Cfg, but ProgramData comes as a system hidden folder, therefore there is the chance that you can't find it in your C:\ drive.

If this is the case, you should enable the view of system and hidden files among the options of Windows File Explorer, otherwise you could directly enter that folder by typing down its path in the address bar of File Explorer:



3. find the files “Config.ini” and “_Config.ini”
4. delete the “Config.ini” file
5. duplicate “_Config.ini”
6. rename the just created file to “Config.ini”
7. restart ParSeq and run a test sequence to get confirmation problem has been solved

The problem is very likely to be the consequence of a sudden electrical supply outage; in case this happens frequently the installation of a UPS system is suggested.