



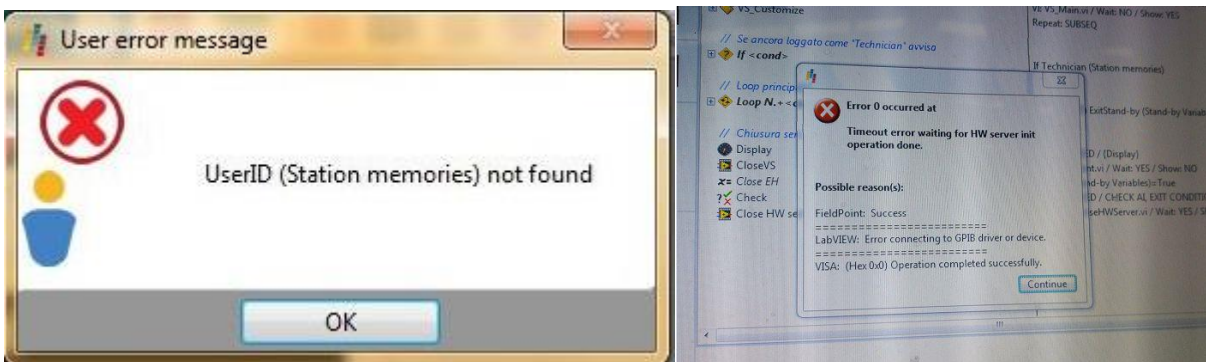
## How to solve "Station memories not found"? - Timeout error

When using [Parseq](#) software you might face the following.

### Problem

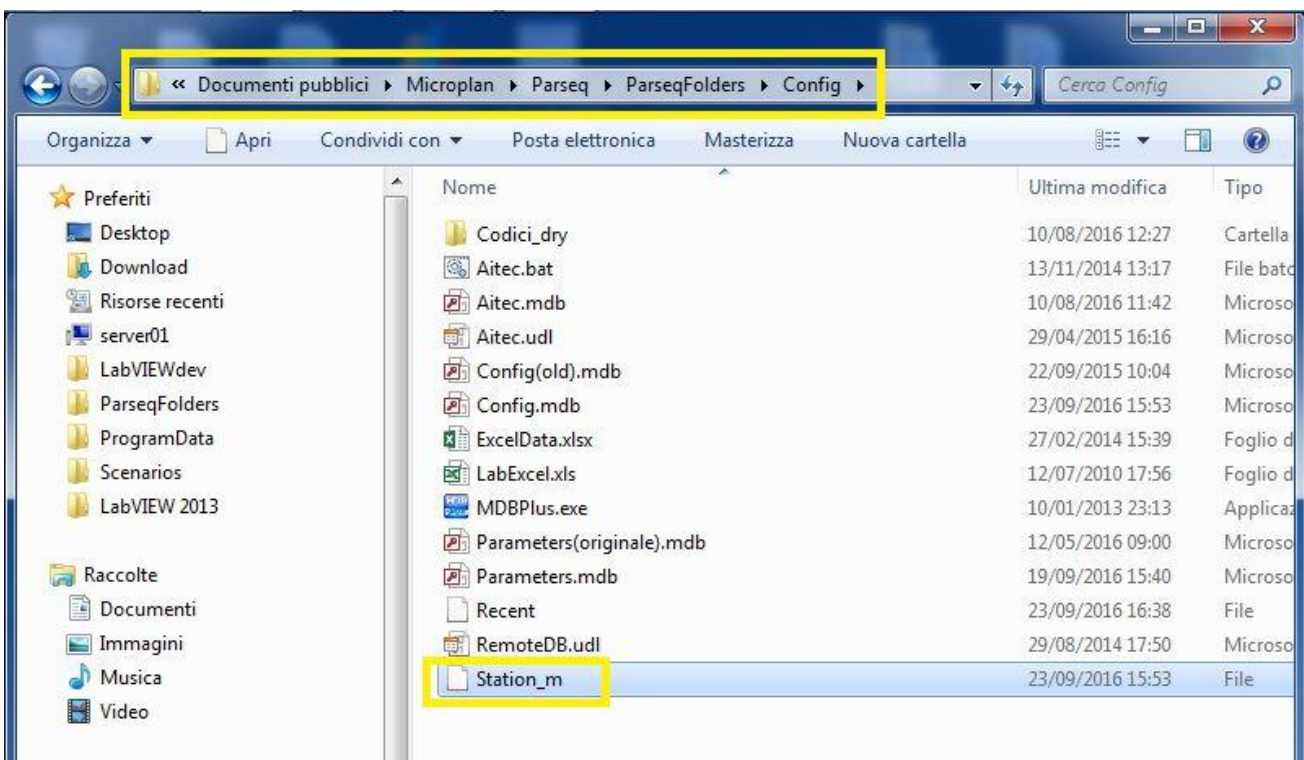
Error messages displayed on the monitor:

- "UserID Station memories not found"; might be associated with similar errors and the following:
- "Timeout error waiting for HW server init".



### Solution

- 1) recover the "Station\_m" file from a previous back-up ([read more](#));
- 2) replace the "Station\_m" file in the folder `C:\Users\Public\Documents\Microplan\Parseq\ParseqFolders`





3) Run Parseq program.

Please contact [Microplan Support](#) whenever a back-up copy of files is not available.

**Note:** the above problem is likely to happen either when main power is suddenly cut, so the PC is unexpectedly powered off, or when the test bench shut-off procedure is not respected ([read more](#)).

---